

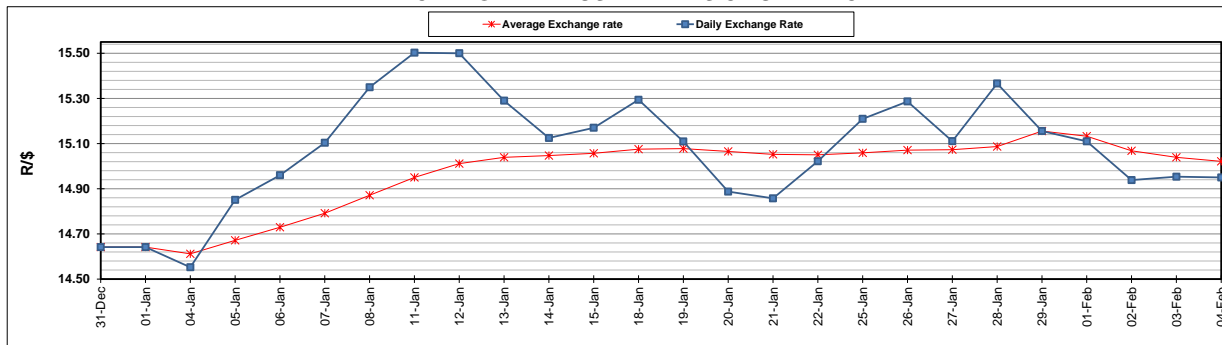
	PETROL 95 ULP	PETROL 93 ULP & LRP	DIESEL 0.05%	DIESEL 0.005%	ILL. PAR.
GAUTENG PUMP PRICE (SA c/l) AS FROM 03/02/2021	1,567.000	1,550.000	-	-	-
WHOLESALE PRICE (SA c/l) AS FROM 03/02/2021	-	-	1,358.420	1,360.820	798.688
SINGLE NATIONAL MAXIMUM RETAIL PRICE	-	-	-	-	1,008.000
BASIC FUEL PRICE - 04/02/2021 (SA c/l)	639.289	631.620	625.799	629.385	608.747
PRESS RELEASE CONTRIBUTION TO BFP 03/02/2021 - 04/02/2021 (SA c/l)	600.170	593.170	599.630	602.030	586.128
UNIT OVER/(UNDER) RECOVERY - 04/02/2021 (SA c/l)	(39.119)	(38.450)	(26.169)	(27.355)	(22.619)
AVERAGE BASIC FUEL PRICE 29/01/2021 - 04/02/2021	621.854	613.741	611.971	615.768	595.091
AVERAGE UNIT OVER/(UNDER) RECOVERY 29/01/2021 - 04/02/2021	(70.284)	(69.171)	(47.141)	(49.138)	(44.363)

ANALYSIS MOVEMENT OF AVERAGE OVER/(UNDER) RECOVERY

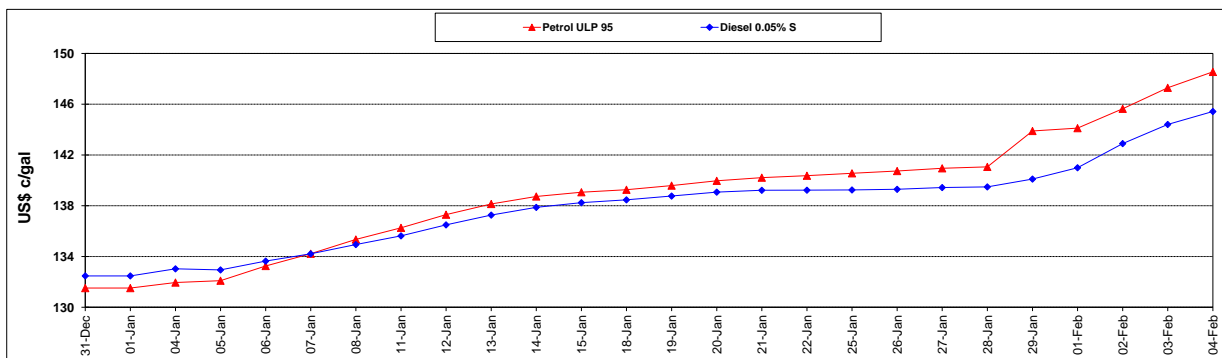
	PETROL 95	PETROL 93	DIESEL 0.05%	DIESEL 0.005%	ILL. PAR.
- MOVEMENT IN INTERNATIONAL PRODUCT PRICES	(73.004)	(71.855)	(49.818)	(51.831)	(46.966)
- MOVEMENT IN EXCHANGE RATE	2.720	2.684	2.677	2.693	2.603
AVERAGE UNIT OVER/(UNDER) RECOVERY 29/01/2021 - 04/02/2021	(70.284)	(69.171)	(47.141)	(49.138)	(44.363)

R/\$ EXCHANGE RATE - (R/\$14.9500 - 04/02/2021)

EXCHANGE RATE USED IN BASIC FUEL PRICE



INTERNATIONAL PRODUCT PRICES OF BASKET USED IN BASIC FUEL PRICE



BASIC FUEL PRICE IN SA CENTS PER LITRE

